



## First Responder Data Sheet

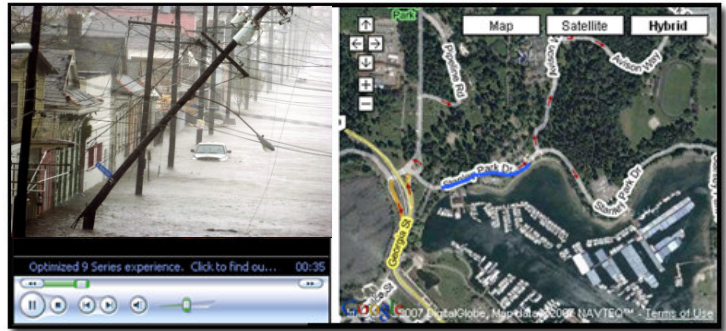


### ***“Live video – when time is critical”***

LiveCast enables first responders to broadcast mission critical video from their cell phone to headquarters and other field personnel in real-time. LiveCast can stream the video over any packet switched IP network (e.g. EV-DO, WiFi, WiMax), while simultaneously archiving the stream for later viewing. GPS coordinates are embedded in every frame of video allowing decision-makers to see exactly where the video is being shot.

#### Features and Benefits

- **Easy to use:** On your LiveCast enabled handset, simply press 'Start' and you're streaming live video from the field. Press 'Stop' and video is automatically saved on a server for later viewing.
- **Flexible viewing:** Videos can be watched live, or later on PCs, Macs and mobile phones—allowing viewers timely access wherever they may be (using Windows Media, QuickTime, and Real players).
- **Efficient notification:** Quick selection of contact or group of contacts to notify via SMS or e-mail that you're live "on air".
- **Agency LiveCast page:** Every account includes an agency Livecast page to share video—easily customized with logo, photos, and messages to viewers.
- **Automatic sharing:** Set preferences in advance, and your video will automatically be published to secure agency websites or community emergency portals.
- **One-to-many:** LiveCast is a one-to-many broadcasting service, which means you can have a few colleagues and decision makers, or thousands of citizens around the region simultaneously watching your video stream.
- **Continuous streaming:** By utilizing streaming PC overcomes the significant limitations of MMS. By streaming, LiveCast overcomes the limitations in video lengths due to local phone memory or MMS capacity. Share the entire event you're experiencing for hours, not just a few minutes.
- **Secure:** Video is safely stored on a server, not on a phone that can be lost or damaged. And available from any of your devices. Video is kept private unless you choose to share it—selectively via a SMS or email link, or published to an agency website.
- **Enhanced mobile search:** Use embedded data such as the date, time and location; plus add tags and other video information to help index and search for videos.
- **Location tracking:** Capture your location frame-by-frame in the video stream using a GPS receiver (Bluetooth or built-in) or Waypoint, and allow viewers to dynamically track your transmission point on a map.



For more information and a complete list of compatible devices, please visit: [www.livecast.com](http://www.livecast.com).

LiveCast is a registered trademark of LCM LiveCast Media, Inc. All other trademarks are the property of their respective owners.

© 2010 LCM LiveCast Media, Inc. All rights reserved. 1/19/2010